

2018 REPORT TO THE COMMUNITY
50 Years of College and
Career Access Innovation



Letter from the Board Chair and CEO

In 1967, Lyndon Johnson was our president; Martin Luther King, Jr. was leading a peaceful fight against racial injustice; race riots and footage from Vietnam screamed from living room TV sets, as silent or screaming protesters marched in the streets; Jimi Hendrix, Aretha Franklin and the Doors' music flooded the airwaves; Elvis married Priscilla; Thurgood Marshall was sworn in as our country's first black justice of the Supreme Court; and Carl Stokes became the first African-American to be elected mayor of a major U.S. city.

It was a time when issues of inequality and inequity were playing out across the nation, and, in Cleveland, Ohio, an anonymous donor and Robert Coplan (a Benesch Friedlander Coplan & Aronoff LLP law firm founder) took notice.

Together, in 1967 they founded Cleveland Scholarship Programs (known today as College Now Greater Cleveland) when they realized that it would take more than just money to help students from low-income backgrounds, especially those who would be first-generation students, enroll in postsecondary programs. It would take creating a culture of "college knowledge" in school buildings and among students and families, which they found was most successfully achieved by physically placing a college and financial aid access advisor within schools.

Prior to College Now's founding, this practice was unheard of, making College Now the first organization of its kind in the country. Over the past 50 years, College Now has grown to be the largest college access organization in Ohio and remains one of the largest in the nation, serving as a leadership model for college access organizations across the country.

Since that pivotal year of 1967, our work has expanded in ways in which our founders could not have envisioned. We have broadened our work to include students as young as 11 and adults as old as 64. We have grown to serve students in nearly 185 schools and community locations across Northeast Ohio, reaching 27,000 individuals in the 2016-2017 academic year alone. Since our founding, we have awarded \$71 million in scholarships to Greater Cleveland students.

But our work isn't done.

Despite College Now's progress in the last 50 years, issues of inequity and inequality in education continue to plague our country and our community. People born into economic disadvantage still face seemingly insurmountable challenges, such as high tuition costs and low social capital as they plan their postsecondary journeys – and with Ohio's statewide attainment goal of 65 percent of Ohioans obtaining a degree, certificate or other postsecondary workforce credential by 2025, our services are more vital to our region's success than ever.

This year's Annual Report features not only successes of the past year, but also it highlights milestones and spotlights alumni from our first 50 years of service. We hope you will be inspired, as we are, by the impact that College Now has had on the lives of so many in our region, as well as by the personal stories of accomplishment achieved by those whom we have served.

We look forward to our next 50 years and the success they will bring as we continue to expand and innovate; it is with great excitement and renewed vigor that we move forward.

We are grateful for the support you have shown us over these past 50 years and hope you will join us as we embark on our next half-century of college and career access innovation.



A handwritten signature in black ink that reads "Alan S. Kopit".

Alan S. Kopit
Chair, Board of Directors



A handwritten signature in black ink that reads "Lee A. Friedman".

Lee A. Friedman
Chief Executive Officer

Mission

College Now's mission is to increase postsecondary educational attainment in Greater Cleveland through college and career access advising, financial aid counseling and scholarship and retention services.

Financial Stability

Operational Revenue for the Fiscal Year

Ending July 31, 2017

Foundations	\$4,275,256
Government Grants	\$4,236,456
Corporations	\$1,938,329
Fee for Service	\$998,122
Special Events	\$610,537
Individuals and Organizations	\$488,110
	\$12,546,810

Operational Expenses for the Fiscal Year

Ending July 31, 2017

Advising and Counseling Services	\$6,680,193
Scholarship Awards	\$3,796,579
Scholarship and Retention Services	\$1,033,513
Fundraising	\$549,514
General Administration	\$459,088
	\$12,518,887

College Now at a Glance 2016-2017 Academic Year

27,000

Number of individuals served by College Now

1,700

High school graduates and adult learners who received College Now scholarships

185

Venues in Northeast Ohio where College Now provides services

\$3.8 Million

Total amount of College Now scholarships awarded

\$2,000

Average College Now renewable scholarship award

1,100

Number of community members from over 400 companies volunteering as mentors for College Now scholarship recipients

\$71 Million

Scholarship dollars awarded to Greater Cleveland students since inception

4 Stars

Highest ranking awarded by Charity Navigator, the nation's largest independent charity evaluator

\$81 Million

Total estimated amount saved by 938 individuals who received College Now's student loan restructuring services over the last four years

\$160 Million

Amount of financial aid the more than 10,000 current college students served by College Now have received

93%

First- to second-year average retention rate among College Now scholarship recipients, compared to the national average of 73% for similar students from low-income backgrounds

69%

Average graduation rate for College Now scholarship recipients, compared to the national average of 18% for similar students from low-income backgrounds

\$70,000

A \$500 investment in College Now advising services results in an average of \$70,000 in financial aid awarded per student over four years of college

It Takes A Village: College Now's Success Would Not Be Possible Without Longstanding Community, Funders' and Board Members' Support

As College Now celebrates 50 years of service, we can't help but marvel at how far we have come since our humble beginnings. We are sincerely grateful for the generous foundations and individuals who have donated their time and money to our organization over the past 50 years.

In 1967, six forward-thinking foundations donated \$16,150 to College Now; that is equivalent to \$118,000 in today's dollars. This funding helped launch the pioneering work of helping Cleveland students gain access to college.

The earliest foundation funders of record are:

- The Cleveland Foundation (1969): \$1,375 (equals \$9,340 today)
- Shirley & Robert C. Coplan Family Fund (1967): \$1,500 (equals \$11,000 today)
- The Benjamin S. Gerson Family Foundation (1967): \$250 (equals \$1,800 today)
- The George Gund Foundation (1967): \$7,500 (equals \$55,000 today)
- The Hankins Foundation (1967): \$2,500 (equals \$18,000 today)
- Martha Holden Jennings Foundation (1971): \$10,000 (equals \$61,940 today)
- The John Huntington Fund for Education (1971): \$25,000 (equals \$154,852 today)
- Kate Ireland Foundation (1967): \$2,400 (equals \$17,500 today)
- The Perkins Charitable Foundation (1967): \$2,000 (equals \$14,600 today)

We commend and thank these funders for their faith in our fledgling program and for their ongoing generosity, leadership and tenacity; during the last 50 years, these nine philanthropic organizations have contributed an astonishing combined total of more than \$44 million.

It is also the time that individuals have invested in College Now that has contributed to our success. Nearly two decades ago, Patrick Mullin encouraged a colleague at Deloitte to join the Board of Directors of College Now. After joining, that colleague

was temporarily transferred to Hong Kong and asked Pat to hold his place on the Board. Pat agreed to step in to the role for a few years until his colleague's return.

That was 15 years ago.

As one of College Now's longest-standing Board members, Pat's deep involvement has spanned some of the organization's most formative years. In 2010, he assumed the role of Board Chair and was instrumental in hiring our current Chief Executive Officer, Lee Friedman, and developing the Board of Directors into the robust group of more than 50 individuals that it is today.

"I have been involved with many nonprofits," Pat said, "and College Now has the best mission in town. Education changes lives, and College Now changes the lives of those who cannot pay for an education themselves."

Recognizing Pat's commitment to College Now's mission and Cleveland's education community, he was selected as the inaugural honoree at College Now's annual Invest in Success event in 2013. In 2014, College Now honored another long-standing supporter, Dr. Jeanette Grasselli Brown, at our second Invest in Success event. Jenny spent eight years on College Now's Board, including five as Board Chair. During her tenure on the Board, Jenny said she was constantly impressed by College Now's advisors and their impact on Cleveland's youth.

"My time with College Now was truly a rewarding effort," Jenny said. "I saw eager young people launched on the realization of the American Dream. It takes providing the opportunity, believing in them and continuing to support them to change their lives."



Top: Jeanette Grasselli Brown and E. Gordon Gee at 2014's Invest in Success event.



Bottom: Pat Mullin at 2013's Invest in Success event



Third Bag Lady Luncheon Is Enormous Success

College Now hosted our third Bag Lady Luncheon this fall, made possible by presenting sponsor KeyBank. The event kicked off the year's 50th Anniversary celebration and was held on Friday, October 6, 2017 at the Cleveland Convention Center. Drawing the largest crowd to date, nearly 900 guests bid on over 500 new and gently-used designer handbags.

At the conclusion of the Bag Lady Luncheon in 2015, the Bag Lady team, led by tri-chairs Rita Andolsen, Micki Byrnes and Trina Evans, as well as co-founders and honorary chairs Judi Embrescia and Sally Stewart, was quick to start preparing for 2017's event. Bag collection, creation of the Bag Lady Host Committee and overall event planning got underway before 2015 had even ended!

On October 6, guests checked in and proceeded into the immaculately designed auction room, which resembled a department store. They admired handbags and accessories from designers such as Kate Spade, Gucci, Prada and Versace, among others. New to the auction room this year were special displays featuring local designers and vendors, including Dagne Dover, FOUNT and California Closets – who created a beautiful closet on-site to hold our large collection of Coach handbags.

Cognizant that not everyone in the room would be interested in handbags, the Bag Lady team made sure that items were available

to appeal to all interests. Along with handbags and accessories, attendees could bid on men's items, such as ties and wallets, as well as unique and special experiences, such as tickets for the Cleveland Cavaliers and United Airlines.

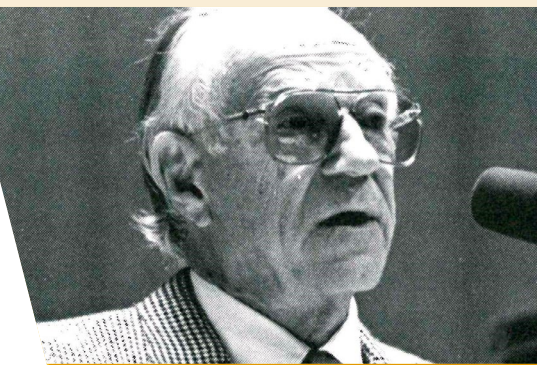
The luncheon, emceed by College Now Board Member and WKYC anchor Russ Mitchell, featured keynote speaker Dee Haslam, owner of the Cleveland Browns, partner of Pilot Corporation and CEO of RIVR Media Companies. Dee spoke about the importance of education in the Cleveland community, sharing anecdotes of her own interactions with individuals who have benefitted from access to education.

In another fun addition to the event, auctioneer Mark Schroeder took the stage during the luncheon to auction off first-class United Airlines tickets and dress circle seats for Hamilton. He also orchestrated a fund-the-need paddle raise to close out the luncheon, where attendees generously donated \$105,580.

In the most successful Bag Lady Luncheon yet, College Now netted approximately \$470,000 to fund the College Now Mentoring Program. Under the leadership of co-chairs Suzanne Aral-Boutros and Trina Evans, the team has already started planning for 2019's luncheon. The 2017 Bag Lady Luncheon was an amazing way to kick off College Now's 50th Anniversary celebrations, and we are excited for 2019's event.

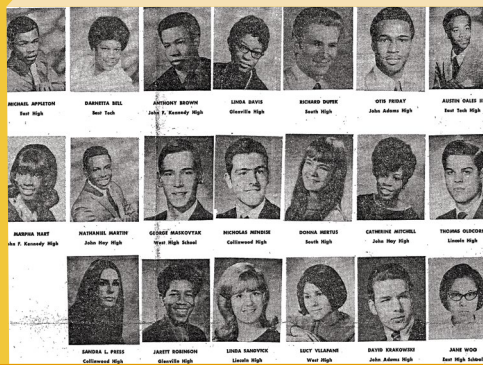


1967



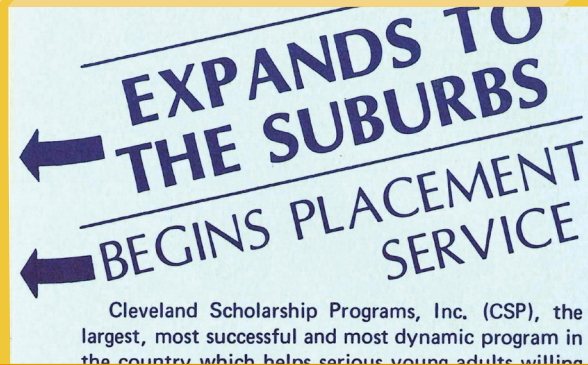
The Cleveland Scholarship Program (CSP) is incorporated by Robert Coplan and an anonymous donor.

1970



CSP has served a cumulative total of 1,000 students.

1975



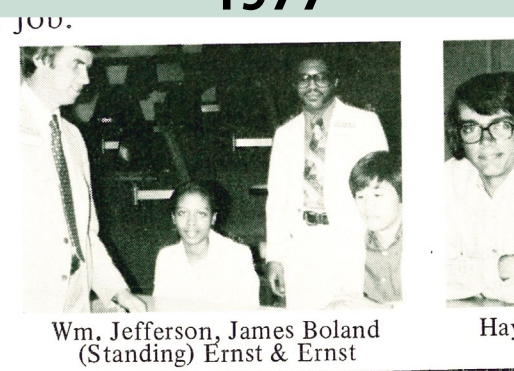
CSP begins providing services to suburban Cleveland schools in addition to CMSD and parochial schools within the City of Cleveland.



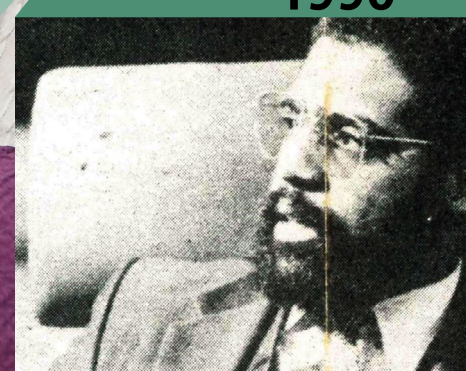
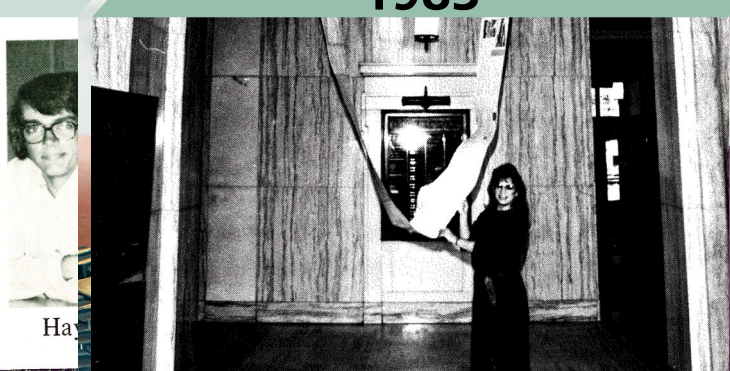
1977

1983

1990



Wm. Jefferson, James Boland (Standing) Ernst & Ernst



CSP serves 9,600 students and becomes the largest youth-serving agency of its type in the country.

CSP launches college and career services in the community to provide services to those not served by CSP in-school advising services.

CSP alum Michael R. White elected Mayor of the City of Cleveland.

College Now's Adult Programs and Services Provided Motivated Mother with Tools to Return to College

A high school graduate with vocational training, Bernadette Robinson knew as an adult she wanted to return to school to earn her degree and advance her career. However, she didn't know how to plan for her academic future – and, with a family and children, she thought going back to school would prove to be a challenge. A professor at Cuyahoga Community College connected her with College Now, where an Adult Programs advisor helped Bernadette develop her postsecondary plan and, with financial assistance through College Now's Adult Learner Scholarship, earn her bachelor's degree from the University of Akron.

College Now's work with adult learners and non-traditional students began in 1991 when the Cleveland Foundation awarded College Now a \$100,000 grant from the Jane D. White Fund No. 2 to establish the Adult Student Counseling Program. Recognizing that adult students face the same financial barriers as traditional high school students – and, often, struggle even more as they attempt to fit postsecondary education into their family lives, work schedules and budgets – College Now offered adults over 25 the same college selection and financial aid counseling services that were offered to traditional high school students.

In that first year, nearly 175 individuals applied for the non-traditional student scholarship, and College Now awarded 33 \$1,000 scholarships. Pleased by the program's success, College Now raised funds to continue the scholarship program. Since 1994, over \$4 million has been awarded from the Jane D. White Fund to provide scholarships to about 775 adults, and the historical average graduation rate of these students is an impressive 73 percent. College Now also offers an Adult Learner Scholarship for students 19 and older who have interrupted their education for one year or more. The Adult

Programs and Services team has grown as well, to a team of five advisors and one AmeriCorps member, and offers adults and non-traditional students college access and career advising, financial aid counseling, scholarship services and student loan debt counseling. As of January 1, 2018, 1,160 individuals who received student loan restructuring services are on track to save over \$100 million. Moreover, since 1994, College Now has awarded over \$8.3 million in scholarships to adult learners.

After earning her degree, Bernadette worked in higher education and never forgot the impact that College Now had on her education and career. When she learned of an opportunity to work at College Now in 2013, she jumped at the chance. She says her own initial lack of understanding of the importance of education drives her to make sure other adult students do not miss out on that same knowledge.

"College Now and education built a self-confidence in me," Bernadette said of returning to school and receiving the Adult Learner Scholarship. Her tenure with College Now is the longest she has ever been at one job, and she doesn't see her path changing any time soon. "I want to keep spreading this message," Bernadette concluded.



*Adult Learner
Scholarship recipient
Bernadette Robinson.*

Alum Greg Moore Says Without Advisor Carolyn Beeler, “I Wouldn’t Have Gone to College”

Gregory Moore, a senior honor student at Glenville High School in 1972, was the first in his family to come close to high school graduation and the first to think about college. Not understanding the process, Greg figured he was going to graduate from high school and apply to college that summer. When his friends started receiving their college acceptance letters in the spring, he realized he had made a mistake and rushed to the guidance counselor in a panic. When the counselor was too busy to help, Greg turned to the only available person in the office, a College Now advisor in her second year on the job named Carolyn Beeler.

Despite it being late in the year, Carolyn agreed to help Greg find a way to get into college for the upcoming fall semester. They completed his confidential financial statement, and Carolyn reached out to the associate director of admissions at Ohio Wesleyan University, asking him to give Greg a chance. After visiting Ohio Wesleyan’s campus that weekend, Greg and Carolyn filled out the application, and he was accepted into the university in late May.

“The rest,” Greg said, “is history.”

It was at Ohio Wesleyan that Greg discovered his love for journalism. Greg graduated from Ohio Wesleyan in 1976 with his bachelor’s degree in journalism and political science, and from there embarked on an illustrious journalism career that included 16 years at the Boston Globe, where he served as the Managing Editor from 1994-2002, and 14 years as the Editor of the Denver Post, during which time the newspaper won four Pulitzer Prizes.

Greg never forgot Carolyn Beeler and spent many years attempting to reconnect with her. Carolyn spent 26 years as an advisor, a tenure that saw the desegregation of the Cleveland Metropolitan School District, the expansion of College Now services into the suburbs and the introduction of College Now’s work with adults and non-traditional students.

Serendipitously, Greg was reunited with Carolyn, then a counselor at Beachwood High School, nearly 40 years after he received College Now services at Glenville. When he was inducted into the Ohio Foundation of Independent College’s Hall of Excellence in 2015, he invited Carolyn and her husband, as well as the associate director of admissions at Ohio Wesleyan, to attend the event where he acknowledged them as the two people responsible for his success.

“College Now connects someone like Mrs. Beeler with a kid like me, from the projects of Cleveland, and gives them a real chance to get a leg up,” Greg said of College Now’s impact, adding, “They understand that having access to college can change the course of anyone’s life.”



College Now alum Greg Moore.



1991



CSP begins offering college access advising and scholarships to adult students.

1992

Boston to Emulate CSP



Polaroid Corp.; Clarence Mixon, CSP; Robert Sperber, Boston University; Grace M

The college access model CSP created is now replicated in 16 cities.

1995



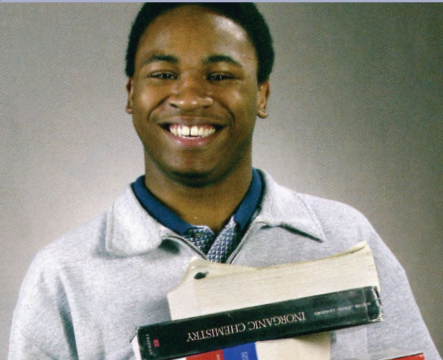
CSP and eight partner organizations incorporate the National College Access Network (NCAN) in Cleveland.



2000

2001

2003



CSP receives its first Federal GEAR UP grant to support CMSD's Wilbur Wright Middle School.

CSP has served a cumulative total of 100,000 students.

CSP begins its STEP UP program with 35 first-graders in East Cleveland. The program follows them through high school graduation and provides college scholarships.

College Now Mentoring Program Emphasizes the Power of Connections

In 2011, College Now recognized that just as advisors provided services for students in high school, students receiving College Now scholarships often needed services in college. The College Now Mentoring Program began that year with a small cohort of students, pairing scholarship recipients with volunteer mentors from the Greater Cleveland community who provided their mentees with advice, support and guidance. The Mentoring Program now encompasses every traditional student receiving a College Now scholarship; today, there are 1,100 mentor/mentee pairs.

Students in the Mentoring Program are often first-generation college students who do not have family members or friends to turn to with their questions about college life. Mentors help their mentees with all aspects of the college journey, from where to buy books to what office to talk to about financial concerns or roommate problems, and they help them gain the social capital that many of their classmates from more prosperous families already have. Representing over 400 companies throughout Northeast Ohio, mentors bring a wide range of experiences to the program and often provide their mentees with job shadowing or internship opportunities that they otherwise may not have discovered.

While the scope of the program is impressive, the results speak to its success. As of the 2016-2017 academic year, a total of 1,537 College Now scholarship recipients have participated in the Mentoring Program, and these students have a 93 percent first- to second-year average retention rate, compared to the national average rate of 73 percent for students from similar low-income backgrounds.

Royale Nicholson is a 2013 graduate of John Hay Early College and attended New York University Shanghai. As a College Now scholarship recipient and mentee in the College Now Mentoring Program, Royale says her mentor, who frequently travelled and was accommodating of Royale's international schedule, was a perfect match.

"I believe we can make the largest impact in students' lives when we harness the full potential



College Now mentee Royale Nicholson at her graduation from New York University Shanghai.

of connections and networking and teach our students to do the same," Royale, now an AmeriCorps College Guide with College Now, said.

Chaundrea Simmons said her mentor helped her through her rocky start at Ohio University. A graduate of Glenville High School, Chaundrea had never been outside of Cleveland and found it difficult to be so far from friends and family. Luckily, she had the support of her College Now mentor behind her.

"I didn't know my next steps," Chaundrea said. "My mentor helped so much."

After college and graduate school, Chaundrea was fortunate to land a job with the company where her mentor currently works. Chaundrea's College Now mentor is now her boss – and Chaundrea is a mentor in the program herself!

Grateful for the impact College Now and the Mentoring Program had on her life, Chaundrea said, "College Now had a premonition for my life that I didn't even have access to."

College Now Alumni Reconnect with Organization through Alumni, Emerging Leaders Associations

As the educational access community in Cleveland grows and changes, support for College Now's mission is more important than ever – and some of our strongest supporters are those who have received our services.

To keep those supportive alumni engaged, as well as retain a strong support base of young professionals who will stay involved with the organization, College Now recently developed the Emerging Leaders Association (ELA), a group of young professionals who are passionate about College Now's mission and are looking to champion that work in the coming years.

Currently, the ELA has about 35 members who range from recent college graduates to professionals who have been in the workforce for over 20 years. The members represent a variety of organizations and companies throughout the Greater Cleveland area and bring diverse perspectives and backgrounds to the group. Approximately one-quarter are College Now alumni, meaning they received a College Now scholarship during their postsecondary studies, and almost three-quarters are mentors in College Now's Mentoring Program.

College Now is also developing a robust Alumni Association as part of the ELA to support students who have received College Now scholarships by helping them to build social capital and continue to develop professional skills integral to successful careers. By linking the Alumni Association with the ELA, the goal is to create an opportunity for alumni and supporters of different backgrounds to come together and focus on the importance of postsecondary attainment, build professional relationships and recruit mentors. Currently, 11 ELA members serve on the Alumni Association committee.

Larissa Malcolm is a graduate of the now-closed Cleveland School of Science, a Cleveland Metropolitan School District high school. The school had a high graduation rate, and most of Larissa's classmates continued to college. As a first-generation college student, however, Larissa faced unique challenges of embarking on her postsecondary journey without insight from family members' or friends' experiences. With College Now's services and financial help, she was able to attend college and earn a degree in social work from Cleveland State University.

Larissa joined the ELA and the Alumni Association understanding the importance of alumni to College Now's mission, having lived it herself, and she has a goal to encourage more of her classmates who received College Now services to engage with the organization. A mentor in College Now's Mentoring Program, Larissa said that College Now alumni who received services first-hand are in a unique position to help the organization and students: "It's important for students to have someone who understands their circumstances."

If you are a College Now alum or are interested in joining our Emerging Leaders Association, please contact Lauren Mastracco (lmastracco@collegenowgc.org or 216.635.0173).



College Now ELA member Larissa Malcolm and her College Now mentee.

Alum Victor Ruiz Takes Lessons Learned to Work as Esperanza Executive Director



College Now alum Victor Ruiz.

Victor Ruiz's first exposure to College Now was in middle school. As part of the Scholarship in Escrow program, he earned money for college for each A, B or C that he received. Victor had a middle school College Now advisor as well, who talked about the importance of going to college and took students on college visits, exposing them early to higher education.

It wouldn't be until his senior year that Victor again received College Now services. Working with advisors, Victor filled out college and financial aid applications and, upon his graduation from the Cleveland Metropolitan School District's now closed-Cleveland School of Science in 1995, Victor matriculated to Baldwin Wallace University. He remained in touch with College Now's financial aid office, which checked in on him regularly, reminding him to renew his scholarship and to make sure everything was going smoothly.

Victor graduated from Baldwin Wallace in 1999 with a degree in English and found his way back to College Now – this time, in a staff capacity. Beginning as a GEAR UP advisor, Victor rose through the organization, managing GEAR UP and other federal programs, and eventually supervising all high school and middle school programs in the organization.

In 2010, Victor moved into the role of Executive Director with Esperanza, Inc., a

nonprofit dedicated to improving the academic achievement of Hispanics in Greater Cleveland by supporting students to graduate high school and promoting postsecondary educational attainment. Victor credits his time providing direct service with College Now as shaping his work and strategy with Esperanza.

"We looked at education from a systemic perspective," Victor said. "We understand that it takes more than telling a child to go to college to get them there. You need to create a system that is in place in all aspects of the educational journey, from preschool to postsecondary, and that reaches the family."

In the community, College Now and Esperanza are strong collaborators. Partnerships with the impACT afterschool program (a 21st Century Community Learning Center program) and the AmeriCorps program benefit both organizations, Victor noted.

As College Now moves into its next 50 years, Victor sees a place for the organization to shape the conversation about postsecondary education.

"The definition of post-high school education is changing," Victor explained. "We need to embrace its different forms. In its first 50 years, College Now was about getting students to college. Now, it's about helping students figure out their most meaningful path and giving them the access and guidance to pursue it."

2007



NCAN moves to Washington, D.C. to raise its national profile and strengthen its role in college access policy.

2009



CSP leverages the AmeriCorps College Guides program to ensure there is a college access advisor in every CMSD high school every day of the school year.

2011



CSP rebrands as College Now Greater Cleveland.



2011



College Now launches an innovative, web-based Mentoring Program with a pilot cohort of 50 scholarship recipients.

2013



College Now starts the Student Loan Rescue program in response to the increasing student loan debt crisis.

2017



College Now has served a total of approximately 350,000 students since inception and awarded over \$71 million in scholarships to Northeast Ohio students and adult learners.

Former College Now AmeriCorps College Guide Rob Hoon (blue shirt) poses with fellow AmeriCorps.



AmeriCorps College Guides Program Gives Students Extra In-School Support – and Changes Lives of Its Members

Since 2009, College Now has managed a robust AmeriCorps College Guides program that allows the organization to deepen our work in high schools. AmeriCorps is a federal service program through the Corporation for National and Community Service that engages members in intensive service to meet critical community needs. With the help of the College Guides, College Now can ensure that an advisor or College Guide is present in most Cleveland Metropolitan School District (CMSD) high schools every day, and their additional help can be deployed to high schools outside of CMSD. College Guides also serve in our downtown Cleveland Resource Center, assisting the Mentoring and Adult Programs.

When College Now was approached to manage the statewide AmeriCorps College Guides program for Ohio in 2014, we seized the opportunity, recognizing the impact it would enable us to have on students in Cleveland while also promoting our best practices to other college access organizations across Ohio. Since then, College Now has partnered with program sites in Canton, Cleveland, Cincinnati, Columbus, Jefferson, Marietta, Oberlin, Youngstown and Zanesville. The program has also expanded in Cleveland to include AmeriCorps Career Coaches, who are assigned to provide additional career services at each of CMSD's 10 career academies.

The extra assistance allows more students to be reached by College Now's services, but it's not just the students who are benefitting from the AmeriCorps program. Members, some of whom received AmeriCorps services themselves while in high school, see the impact just as much.

When Stephanie Born was in high school, she knew she wanted to go to college, but, as a first-generation college student, she wasn't sure about the steps to take to get there. Luckily, she connected with Sarah Clark, the AmeriCorps College Guide serving at Brookside High School in

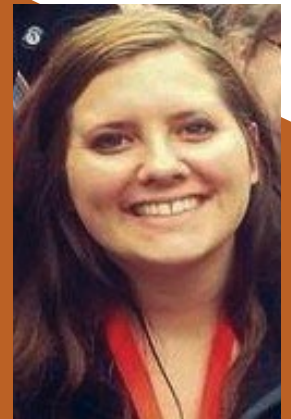
Lorain County, who helped Stephanie with the college application and selection process. Sarah also helped Stephanie talk to her family about college and break down barriers to going away to school.

Upon her graduation from Ohio University, Stephanie knew she wanted to give students the same support she received in high school. Crediting College Now with giving her the ability to attend college, Stephanie joined AmeriCorps and chose to serve in Cincinnati's AmeriCorps College Guides program overseen by College Now. AmeriCorps helped Stephanie realize that her passion is serving youth; she is currently a Talent Search Advisor with Cincinnati Youth Collaborative's College Readiness & Success Programs at Shroder Paideia High School.

Also a first-generation college student, Rob Hoon, who grew up in central Ohio, struggled early in his college career. He found himself drowning in debt after his first quarter, and he had to transfer closer to home midway through his first year. After working full-time and saving enough money, Rob transferred to The Ohio State University's main campus.

Unsure of how to proceed after graduation, Rob was introduced to the AmeriCorps College Guides program at a job fair. He was inspired by the idea of helping students who didn't know what they were doing in the college to avoid making the same mistakes he had made.

Rob served with College Now's AmeriCorps College Guides from 2009-2010, working in two CMSD high schools, John Marshall and South High School (South has since closed). So drawn to the work was he that he pursued a career in teaching and education, focusing on underserved populations. Rob currently serves in an administrative role in a Cincinnati school district as a case coordinator of Special Education.



Former College Now AmeriCorps College Guide Stephanie Born during her service in Cincinnati.

College Now Donors 2017

This list reflects gifts, payments and multi-year pledges from January 1 through December 31, 2017. We have made every effort to ensure the completeness and accuracy of this report. If an error or omission has occurred, please accept our sincere apologies.

\$1,000,000 AND ABOVE

The Cleveland Foundation
Ohio Department of Education
ServeOhio

\$500,000-\$999,999

Cuyahoga County
The John Huntington Fund for Education
Ohio Department of Higher Education
U.S. Department of Education

\$250,000-\$499,999

The George Gund Foundation
The Nordson Corporation Foundation
Swagelok Company

\$100,000-\$249,999

City of Cleveland
KeyBank
The Fred A. Lennon Charitable Trust
Pipefitters Local 120
United Way of Greater Cleveland
Jane D. White Fund No. 2

\$50,000-\$99,999

ACE Mentor Program of Cleveland
Barberton Community Foundation
Jack W. & Shirley Berger Endowment Fund of
the Jewish Federation of Cleveland
City of Cleveland
Cliffs Natural Resources
Coca-Cola Foundation
The Larry Doby Youth Fund
GAR Foundation
Maltz Museum of Jewish Heritage
David & Inez Myers Foundation
National College Access Network
PNC
Saint Luke's Foundation
Fred E. Scholl Charitable Foundation
Westfield Insurance Foundation

\$25,000-\$49,999

Anonymous (2)
ArcelorMittal
Arconic Foundation
Cleveland Browns Foundation
The Eva L. and Joseph M. Bruening Foundation
Margaret A. Cargill Foundation
The Char & Chuck Fowler Family Foundation
Hyatt Legal Plans, Inc.
Martha Holden Jennings Foundation
Medical Mutual of Ohio
The Morshana Foundation
John P. Murphy Foundation
PwC
The Reinberger Foundation
The Sherwin-Williams Foundation
The Kelvin & Eleanor Smith Foundation
Danny Solow and Audrey Davis
The Swamy Family Foundation
Third Federal Savings & Loan Foundation
The George Garretson Wade Charitable
Trust #2
The Thomas H. White Foundation

\$10,000-\$24,999

The Abington Foundation
Akron Community Foundation
Anonymous
Bank of America
Benesch, Friedlander, Coplan & Aronoff LLP
Bernie Moreno Companies
Bicknell Fund
Suzanne Aral-Boutros and Akram Boutros
Richard and Doreen Cahoon
California Closets
M.E. & F.J. Callahan Foundation
Robert L. Canady
Capital One
Cavaliers Youth Fund
William and Cathy Christopher
Cleveland Beer Week, Inc.
Cleveland Clinic
The George W. Codrington Charitable
Foundation
Cohen & Company
The Community Foundation of Lorain County
Harry Coulby Fund No. 2
Eaton Corporation
Judith and Thomas J. Embrescia
Lauren Rich Fine and Gary Giller
Fortney Foundation
The Giant Eagle Foundation
Nicholas Grandini
Jimmy and Dee Haslam
George M. & Pamela S. Humphrey Fund
Independence Excavating, Inc.
Patricia M., Jaclyn and Kathryn Inglis
Intown Club of Cleveland
JPMorgan Chase Foundation
Margaret A. Kennedy and Robert Paul
Stewart A. and Donna Kohl
Laborers' International Union of
North America, Local No. 894
The Lincoln Electric Co.
The Lubrizol Corporation
Jimmy and April Malone
Elizabeth Ring & William Gwinn Mather Fund
The McGregor Foundation
The Meisel Family Foundation
The MetroHealth System
Estate of Dorris C. Michalske
The Perkins Charitable Foundation
Preformed Line Products Co.
Peter K. Ranney
Albert and Audrey Ratner
RPM International, Inc.
Robert J. and Cynthia Schneider
Shearer's Foods, Inc.
Kent H. Smith Charitable Trust
William M. Weiss Foundation
Milton A. & Roslyn Z. Wolf Family Foundation
Dan and Ellen Zelman

\$5,000-\$9,999

Aleris International Inc.
Christopher and Tina Benavides
Business of Good Foundation
Karen J. Carcione
Cargill Incorporated
Case Western Reserve University

Centric Consulting, LLC
Cleveland Indians
Cleveland Rotary Foundation
Colleen M. Craven
Cuyahoga Community College
Dominion Foundation
Katinka Domotorffy
Dworken & Bernstein
Forest City Enterprises
Erwin and Katherine Geis Charitable Fund
David B. Goldston and Bonnie Borman
Grant Thornton LLP
Ida Haber
Harvard Business School Club of
Northeastern Ohio
Huntington National Bank
Information Security Summit
John Carroll University
Majic Family Fund
Kiwanis Foundation of Cleveland, Inc.
Toby D. Lewis
Gilbert and Carol Lowenthal
The Edward A. & Catherine L. Lozick
Foundation
Toby and Melanie T. Maloney
Jack, Joseph and Morton Mandel Foundation
Megan L. Mehalko
William C. Meier Foundation
Beth E. Mooney
The Murch Foundation
Nissan of North Olmsted
The O'Neill Brothers Foundation
Parker Hannifin Corporation
Parkway Pharmacy
Mark Ross
Joseph D. and Catherine Sullivan
TEGNA Foundation
Tucker Ellis LLP
Susan M. and Bill Tyler
United Way of Greater Atlanta
Jeffrey M. and Hallie Wasserman
Anna L. Zverina

\$2,500-\$4,999

Anonymous
Annette Ballou
Brian C. Barren
Stephen W. Boesel
Glenn and Jeanette Grasselli Brown
Gabe and Tracy Bruno
Brent M. and Barb Buckley
Calfee, Halter and Griswold LLP
Jim and Mo Callam
Harry Carlson
Carreras Media Services LLC
Fiona and Brian F. Chambers
Change for Charity
Deloitte
James A. and Debra L. Deroche
DeWine Family Foundation, Inc.
Christine & Guido DiGeronimo Foundation
Dix & Eaton
Mary Donley
FirstEnergy Foundation
Fortney & Weygandt, Inc.
Harry K. Fox & Emma R. Fox Charitable
Foundation

Joyce Glickman
 Haskell Fund
 Kate Fortney Horne
 Robert C. and Kellie J. Huxtable
 J3 Clothing Co.
 Catherine Kilbane
 Kinzua Environmental, Inc.
 KPMG
 Charles and Joyce Kullik
 Steven Kutnick and Jacquelyn F. Derrrow
 The Laub Foundation
 Marketplace Events
 Gaylee McCracken
 Medic Management Group
 Patrick S. and Amy Mullin
 Norhio Plumbing, Inc.
 Oswald Companies
 Our Lady of the Wayside
 Cheri M. Phyfer
 Sandra Pianalto
 Julie A. and Peter E. Raskind
 The Ratner Miller Shafran Foundation
 Charles Rich and Sally Inglis Rich
 Elizabeth Riczko
 Edward Rivalsky
 Lawrence M. and Sally Z. Sears
 John W. and Pamela A. Spencer
 Rob and Nancy Stall
 Sally and Terry Stewart
 Sysco Cleveland, Inc.
 Andrea Thome
 University of Akron
 Universal Windows
 Vocon Design, Inc.
 The S. K. Wellman Foundation
 Wells Fargo Insurance
 John S. Wilson
 WJW Fox 8 Cleveland

\$1,000-\$2,499

Kristen Baird Adams
 Stephanie and Juan Antunez
 Richard and Sherry R. Aronson
 William and Jane Baldwin
 Banks-Baldwin Foundation
 Julia Barrett
 Jules and Fran Belkin
 Jamie Belkin
 Virginia Benjamin and Philip Woodcock
 Anne Blum
 Alexandria J. Boone
 Amy Brady
 Christopher Brandt and Beth Sersig
 Sabrina Britt
 Broadview Heights Education Foundation
 Denise Bugansky
 Kimberly Chen
 Susan Chiancone
 Richard and Joanne Clark
 Cleveland Consignment Shoppe
 Cleveland Hillel Foundation
 Sara Connor
 William E. and Mary Conway
 Corporate Charters
 Lee and Janet Cramer
 Richard and Michelle Creger
 Cynthia Cromling
 Robert R. & Gay C. Cull Family Foundation
 J. Patrick Cunningham
 Diane Downing and Tom Corrigan
 Trina Evans and Ken Birch
 Eileen Fisher, Inc.
 Fairport Asset Management
 Umberto and Maryellen Fedeli
 Allen H. Ford

Ruth Fortney
 Charles D. and Charlotte Fowler
 Greg and Kathleen Freeh
 Lee A. Friedman and Joe Gogol
 David C. and Claudia Fulton
 James and Carol Garanich
 Barbara Ginn
 Florence S. Goodman
 Goodman Real Estate Services Group
 Richard and *Carol Gross
 Hahn Loeser + Parks LLP
 Kelly Hancock
 Charles and Kathie Hardin
 Lilli Harris
 Mary Herzak
 Hirtle Callaghan & Co.
 Shane Hollett
 Michael J. and Jane R. Horvitz
 Hyland Software, Inc.
 Anita Jones
 Bernard L. and Nancy Karr
 Catherine O'Malley Kearney
 Ernie Kellerman
 Amy E. Kellogg
 Kathleen Kennedy and Doug White
 John J. and Karla King
 Kircher Educational Services Ltd.
 William and Jean Koehler
 Alan and Susie Kopit
 Donna Chernin Kurit
 Bobby R. Larkin, Sr. Charitable Association, Inc.
 Lear Promotions
 Stacey A. Bell-Lynn
 Anna Maloney
 Paul and Dorothy Maloney
 Mansour, Gavin, Gerlack & Manos Co., LPA
 Holly Martens
 Nancy W. McCann
 Jennifer McKinley
 Janet Miller
 Joseph J. and Sheri Morford
 John C. Morley
 Yvonne Morningstar
 Janice G. Murphy
 Tom A. and Ann M. Nerone
 John G. and Karen R. Nestor
 Evelyn B. Newell
 Gerald F. and Evelyn Newman
 Marie Newman
 Next To Me Intimate Apparel
 Novagard Solutions, Inc.
 Ohio Concrete Resurfacing, Inc.
 Ohio Farmers Insurance
 Raju N. and Lisa Patel
 James R. Pierce
 Lawrence and Julia Pollock
 Denise Reading
 Sean and Lisa Richardson
 Stephen P. Robbins and Laura F. Ospanik
 Todd and Shelley F. Rodman
 Andrew and Lynn Rollins
 Walter J. and Janice A. Romansky
 Steven Rosen
 Jennifer Rosenberg
 Alan and Barbara Rosskamm
 Rotary Club of Strongsville
 Traci and Scot Rourke
 Robert C. and Katharine C. Ruhl
 David Ryan
 SalesForce.com Foundation
 Richard F. and Elizabeth A. Schiferl
 Stacey Schroeder
 Denise Shafer
 Shiksha Daan Foundation
 Melanie Shock

Linda R. Silverberg
 Michael Sloe
 Barbara Smith
 Chann Spellman
 Angie Spitalieri
 Celeste Spitalieri
 Sean and Laurel Stack
 David and Deborah Stahler
 The Helen F. Stolier and Louis Stolier
 Family Foundation
 Swaminathan and Garg Foundation
 James Szabo
 Taylor Oswald
 Joe and Annie Thomas
 Thompson Hine LLP
 Ingrid Tolentino
 UBS Financial Services Inc.
 United Way of Metropolitan Chicago
 Deborah Vesey
 Daniel P. and Molly Walsh
 Elizabeth H. Warshawsky
 Kittie D. Warshawsky and Timothy Tibbitts
 Ronald E. and Terri Weinberg
 John and Margaret Wheeler
 Thomas J. and Kathleen G. Wilson
 Peter and Robin F. Winokur
 Alenka M. Winslett
 WKYC
 Megan M. Wolk
 Woodward Hines Education Foundation
 Mark A. Worford
 Timothy and Sandy Wuliger
 Jasmine Aral Yeh
 Sara Zeitler
 Lawrence E. and Jill Zupon
 Mark and Janice Zupon

\$500-\$999

Thomas W. and Joann Adler
 Jennifer L. and Mark J. Altstadt
 Anonymous
 Ric and Kate Asbeck
 ASW Global, LLC
 Don Banas
 Jack Belcher
 Gina Beredo
 Julie Betts
 Linda Bickerstaff
 Big Boy Restaurants International LLC
 Courtney Bitonio
 Martin E. and Mary Ann Bobal
 Robyn Boebinger
 Michael Bohinc
 Tess Boutros



Caprice Bragg
Breakthrough Charter Schools
Vicki Broer
Kate Brown
Henry G. and Patricia Brownell
Kenny Cahill
Homer D. and Gertrude K. Chisholm
Maggie Christopher
Michael and Lori Conley
Manohar L. and Chandra K. Daga
Pamela Davis
Douglass & Associates
Ward and Colleen Dumm
Melanie Dunn
Durrel Corporation
John and Traci Egan
Annie H. Engel
Jeffrey and Heather R. Ettinger
Jessica Fabiano
Kate Faust
Five Points Dentistry
Vickie C. Gallagher
James R. and Laura Geuther
David and Brenda Goldberg
Cynthia Graham
Linda F. Harper
Paul and Janet Havener
Mary Herrick
Kenneth and Kristi Horner
John and Sharon Hosek
Lee Ann Howard
Pamela Jacobson
Christine Jindra
Lucinda Keown
Nanette Kepchar
Layton and Barbara Kest
Chris Kiriakou
Brenda Kirk
Jack and Karen R. Kleinhenz
Victoria M. Lacey
India Pierce Lee
Jason and Heather Lutz
Mark Magyar and Susan Dolfi
Kelly Manderfield
Richard D. and Margaret Margolis
Materion Corporation
Shari May
Melanie McAllister
McCarthy, Lebit, Crystal & Liffman Co., L.P.A.
Anne McDowell
Patrick and Martha McGraw
Linda McHugh
Stanley and Barbara Meisel
Bradley Mendelson

Loretta Mester
Lorraine Miller
Russ Mitchell
Michael J. and Petra P. Moran
Bernie and Bridget Moreno
Frederick and Jakki Nance
Michael and Marcia Neundorfer
Sunny Nixon
Ohio Franchise Management Corporation
Mary Beth Pate
Kendall Perkins
Paul and Kim Pesses
Jane Platten
Tami Polmanteer
Kim Puterbaugh
Heather Ransom
Emily Reitenbach
Reminger Co., LPA
Madeline and J. Harlen Rife
Roetzel & Andress
Christopher and Natalie Ronayne
Cari Ross
Noha Ryder
Aaron Saltzman
Michele Scott Taylor and Douglas Taylor
Fareed and Laura Siddiq
Neil P. Smith
Gordon M. and Shannon Snow
Sports & Scholars
Howard A. and Terri Steindler
Richard and Betsy Stovsky
M. Constance Swan
Daniel Tyrpak
United Way of Summit County
Rachel Van Meter
Pam Vitale
Krissie Wells
George Wenz
Dickson L. and Ann Whitney
Mary Wiedmeier
Catherine Wilkins
Kris Willings
Susan Wolkov
Thomas Zlatoper

\$250-\$499

Brendan and Marnee Anderson
Rita Andolsen
Lauren E. Backus
Shelby Ball
Brent and Ann Ballard
Barnes & Noble, Inc.
Dan Barnett
Robin Baum
Carrie A. Benedict
Debbie Berry
Rita Bigham
Justine S. Blossom
Gary Bohinc
Norman and Deborah Bolden
Cynthia Emlen Boncella and Keith Anderle
Brad and Rebecca Borden
Jasmine Boutros
The Robert and Paula Jo Boykin
Family Foundation
Robert P. and Beth W. Brandon
Monica Brown
Stephanie and Jeff Bunsey
Charles M. and Susan I. Caito
Ruth Clemens
Erin Connell
Jeffrey P. and Patricia D. Consolo
Rick Contipelli
Tracy Crandall
Renee Csuhran

Carrie B. Davis
Terry Davis
Charles T. Day Family Charitable Fund
Erin Deimling
Maria Delchin
Detroit Drives Degrees
Susan DiMassa
Richard M. Donaldson
Stephanie Dorsey
Nancy Dowding
Robert and Sarah Durham
Bridget Eastep
Beth Embrescia
Matthew and Chastity Embrescia
Jan Focke
Sherri Foxman
Ann Frangos
Dana Funyak
Patricia Gallagher
Patricia Gary
Samuel and Lynne Gerace
Joseph A. and Christine Douglas Glick
Matthew Glickman and Susie Hwang
Adrienne Goldberg
Michael E. and Stacy Goldberg
Bernard D. and Susan Goodman
Rhonda Goss
Catherine Saegel-Graham
Barbara H. Gustafson
Ann Gynn
Cindy Halle
John P. and Paige Hanley
Stephanie Harrington
Kristene Hawk
Jill Hennessey
Robert T. Hexter
Carly Hill
Andrea Hogben
Frank Holowach and Pam Williams
Cynthia Huffman
Heidi Ihlenfeld
Chad V. Johnson
Linda Kane
Charles King and Catherine Keating
Kirch Realty LLC
Katy Kleinhenz
Jack and Holyn Koch
Elroy D. and Dee C. Kursh
William B. La Place
Monica Lacks
Collette Laisure
Nat and Elizabeth Leonard
Todd W. Locke
Elton Lytle and Kristin Galewood
Caitlin Magner
Angela G. Mago
Frank and Lisa Malone
Mary Maloney
Garry W. and Jane A. Marquiss
Susie Mascaro
Lauren H. and John Mastracco
Ellen M. McCarthy
Thomas and Carol McDonald
Kristine McGee
Amy McMaken
Laura Miceli
Sarah Mihalik
Ann Miley
Paul Misterka
Pauline Moorman
Marc and Amy Morgenstern
Warren L. and Betsi Morris
Donald Morrison
Randall and Christine Myeroff
NACCO Industries, Inc.



Dale and Barbara Nitzsche
Mark Nolan
Keely O'Bryan
Margaret O'Reilly
Debra Orlansky
Larry Oskowski
Brooke Penny
Roland S. Philip and Linda M. Sandhaus
The Pittsburgh Foundation
Julianne Potter
Michelle Reef
Amanda Reeves
Robert Patrick Salon
Peter and Martha Rome
Jean Rond
Heather Roselli
Deborah Ross
Bradley Rucki
SapientRazorfish
George F. Schaefer
Donald S. and Toni Scherzer
Katharyn Schwab
Spencer Seaman, Jr.
William R. and Nancy C. Seelbach
Racheal Seibert
Gary and Mary Ann Shamis
Leo J. Shapiro & Associates
Michael and Karilyn Shay
Elizabeth Sheeler
Phillip B. and Ann Singer
Michele Spectorsky
Jill Stanley
Larry and Judy Strah
Mary Lou Stricklin
Fred and Betsy Stueber
The Style Loop
Kathleen A. Thompson
Amy Times
Lawrence M. and Yolanda Tolson
Teresse Tuchscher
United Way of Rhode Island
Julia Vail
Cheryl Forino Wahl
Walthall, Drake & Wallace, LLP
Jason Warner
Michelle Warner
Paul Wellener
Melissa Crockett Willis
Eliza Wing
Abe and Idelle Wolf
Elissa Wuliger
Pam Young

\$100-\$249

Colleen Abdalian
Anna Adams
Sara A. Adams
AllianceBernstein
Tim Ambrose
Richard S. and Anne Ames
Laura Anderson
Alice Armstrong
Curtis R. Arrington
Meera Ayad
Cheryl Bailey
Katherine Bang
Dana Bankhurst
Jonathan E. and Debbie Bartlett
Bruce Bechold
Victoria Bell
Richard Benson
Julia Benzai
Tricia Berkman
Jill Bisco
Frank Blackmon

Sarah Blaha
Flora Blumenthal
Carlotta Boeschstein
Charles P. and Julia Bolton
Shannon Boutros
Alison Bozic
Julie Brandy
Steve and Ann Brick
Beth Brody
David Bronson
Robert Clarke Brown
Steve H. Brown
Nicole Brownell
Eileen Burkhardt
Nicole Burkhardt
Jennifer Burlingame
Carrie Busic
Annette Busse
Shannon D. Callahan
Cathleen Campriani
Ann Caresani
Antonette Carlo
Michael C. Carreras
Brian and Tracey Carroll
Susan Casarona
Chris Catanese
John and Mary A. Cavanaugh
Barbara Chambers
Sunil and Cynthia Chand
Yolanda Chanoine
Taryn Chmielowicz
Laurel Chockley
Carrie Clark
Dan and Nan Cohen
Philip and Lynne M. Cohen
Roger and Linda Cohen
The College Club of Cleveland
Christopher and Michele L. Connell
Michael A. Costanzo
Treacy Crowley
The Cruse Family
Pitt A. and Sally H. Curtiss
Kelley Dario
Jennifer A. Davis
Elizabeth and Brody Day
Samuel D. Delzoppo
Cynthia DeMarco
Beverly S. Dempsey
Gary S. and Andrea Desberg
Nathalie Dibo
Frances Dickenson
Lee DiGeronimo
Robert and Jennifer DiGeronimo
Directions Service
Eugene Dobryakov
Michael Dostal
Emily Drake
Chuck and Rita Drvenkar
Jill Dunaway
Linda Dunn
Jenna Eastham
Charles and Kirsten M. Ellenbogen
Adrienne Ellis
Christina Embrescia
Christina Evans
Avroy A. and Roslyn Fanaroff
John and Ann Farrall
Lucille Faup
Sharon L. Fedele
Judi Feniger
Michael Ferkovic
Fernway Social Committee
Darrell Fields and Helen Forbes Fields
Ruth Fiordalis
Catherine Fishbach

Robert Fletcher
Barbara Fodor
Kim Fogarty
Bill and Carol Foley
Wayne and Lynette Forde
Gregg and Madelyn Foster
Rosetherese Fox
Matthew H. Frank
John Fratus
Cheryl Fuller
William Garrison and Mary Jo Mlakar
Amber Genet
Dr. Saul Genuth
Anna Gibson
Marjorie Glick
Laura Goldberg
Nancy C. Goldberg
Taylor M. Goodman and Firas Ibrahim
Annemarie Grassi
Nicole Gray
Judith Greenberger
Ginette Gremillet
Burt W. and Beatrice Griffin
John Grunden
Gail Haller
Jane Hamrle
Meredith Hardington
Renee Holcomb-Hardwick
Sharmaine Hardy
Cynthia Harfouche
Donna J. Harlan
Mary Harvey
Debra Hayes
Christopher C. and Kristina L. Hayward
David G. and Lynn Heiman
James E. Heflich and Patricia Kellner
Susan Herbold
John S. and Elaine M. Hibshman
Edith F. Hirsch
Charles R. Honton and Margaret Beck
Doug and Mary A. Horner
Charles E. Hoven and Margaret D. Bray
Mary Hunt
Dina Huss
Sue Hustek
Denise Iacobacci
Tara Kirchner-Jean
Katherine Jennings
Shannon Jerse
Ceena R. Jewell
Lorryann Jurcisin
Robert Kaliszewski
Anastasia Kaluszyk
Juliana Kasczak
Deborah Kay
Annette Kellogg
Meredith Kempton
Terri Kennedy
Brett Ketvertis
Ariane Kirkpatrick
Annie Kleinhenz
Rosanne Klonaris
Merry Knab
Mary Koch
Gini Smith-Kolar
Martin and Sandra Kiely Kolb
Kathleen Komnenovich
Byron and Joan Krantz
Michele L. Krantz
Ann Marie Krol
Dara Krueger
Constance Kuehn
Bill and Karen Kufahl
Brian Kus
Lakeside Supply Company

Brian Larson and Laurie J. Albright
Laurel School
Taylor M. Laurer
Teresa LeGrais
Tom E. and Betsy Leib
Stephen and Lillian Levine
Teresa Levitsky
Daniel Lewis
Deandra Williams-Lewis
Paula Lewis
Nicole Liambeis
Kenneth J. and Mary Ellen Liang
Michele Linton
Kimberly Littell
Susan Mayer-Livingston
Larry and Julia Loeb
Hope Lomas
Allison Lukacsy-Love
Susan Lowrie
Marimargaret Lucarelli
Kristen Lucas
Lawrence A. Mack
Philip Madden and Debra Rozin
Mackenzie Makepeace
Allen and Linda Marabito
Richard T. and Polly A. Marabito
Suzanne Mars
Bernadette Marshall
James and Kathe Mayer
David Mayo
Margaret Mazanec
Mary Lou McCarthy
Celeste McClung
Janice McCourt
Todd and Gwen McCuaig
Mauren McDewitt
Bridget M. McFadden and Thomas Sylvester
Patrick McGeever
Kevin J. and Nancy McGinty
Jennifer McKeegan
Amy McMullen
Jane McMullen
Peter and Jennifer Meyer
Mitchell Brothers Ice Cream
Amanda Miller
Cliff Miller
Dale A. and Carol J. Miller
Sondra Miller
John Mills
Kimberley Osborne-Milstein
Elaine Minch
Ernest S. Mishne
Jeffrey Molchan
Kenneth Moore
Shanese Moore
Ellen Moreau
Kristen Morris
Katie Noble-Murphy
Dale Naylor
Mollie Neale
David and Lori Neiswander
Vinhloc Nguyen
Camille Nixon
Mike and Paula Occhionero
Marjana Ognjenovic
Susan S. Olson
Colleen O'Neil
Cheryl Packert
Eric Patthoff
Kristen Peed
Vanetta Perry
Michael and Barbara Peterman
Camille Peterson
Maria Petitti
Mark Phillips and Lita Gonzalez

Isaiah Pickens
Jason C. and Kellie Pinizzotto
Seth Podolsky
Greg and Marcia Snavely Polyak
John Porter
Veronica Porter
Rosanne Potter
John Pouliot
Progressive Corporation
Alisha Quinn
Roger F. and Alison Rankin
Bruce Ransom
Stacy L. Rathbun
Therese Razzante
Leslie Reddy
Marlene Ricanti
Barbara S. Robinson
Mikki Rocker
Charles J. and Margaret Romansky
David and Annette Romansky
Kiesha Ruth
James and Betsy Sampliner
Monica Sansalone
Courtney Sargent
Dorothy M. Sawyer
Sara Schaefer
Curtis Scheck
Lori Scheid
Elliott and Gail Schlang
Russell C. Schlote Jr.
Mary Schmidt
Nadia Schroth
John D. and Barbara Schubert
Kristyn Schumacher
Samantha Selio
Jill W. Selman
Kimberley Sewell
Michele Seyranian
Brett and Marcy Shankman
Steven Sharp
Sheiban Jewelers
Thomas and Judith Shimko
Stephanie Siegel
Joanne Siegla
Todd and Stephanie Silverman
Robert and Donna Simoneau
Maryum Sims
Gretchen D. Smith
Ellen Spear
Stephanie and Jeffrey Spencer
Rena Spithas
Emily Spivack
*David Stashower
Nancy Stickney
Terry L. and Shirley J. Stineman
Elaine Straub
William Stultz
Cathy Suffecool
Bridget Sukys
Molly Sweeney
Joseph Szabo
Lorraine Szabo
Julie A. and George M. Szeltner
Suzanne Taigen
Jennifer Tekancic
James A. and Joanne Tillie
Mary L. Times
Denise Toil
Catherine Tompkins
Bruce Trammell
Dianne Treska
My Hang Truong
Howard J. and Sara S. Tucker
Sally Turner
Roger S. and Sharon K. Vail

Deborah VanValkenburgh
Patricia Varricchio
Carrie K. Vaughan
Dee Vega
Jessica R. Vitale
Phillip Wachter
Samantha Wain
JoAnne Wancata
Ye Wang
Susan Warner
Mary C. Warren
Judith Watson
Andrew Watterson
Sheila Wayne
Sharon Weeden
Joseph Weicher
Jay Westbrook and Helen Williams
Karen White
Shawna H. Whitlock
Shauna Widman
Laurel Wilder and Zack Meisel
Wilkes Plumbing & Heating
Jeff and Lisa Willbrand
Danny R. and Lin Williams
Sherrie Williams
Sonali Wilson
Jennifer Woods
John H. and Jacqueline F. Woods
Stephen and Diane Young
Steven and Ellen Young
Stacey Zeleznik
Jill L. Ziegler
John and Peg Zitzner
Renee Zuponic

\$99 AND UNDER

Mikhail Alekseyev
Julie Allen
Nicole Amacher
Michelle Amato
Amazon Smile
Jennifer Andress
Philip Angelo
Susan Anton
Yvonne Askew
Virginia Backus
William Baddour
Frank Balass
Geoffrey and Maryann Barnes
Lisa Barno
Erin Bartkus
Heather Beasley
Frank Bechtel
Joseph Beno
Dee Berardi
Aaron M. Berger
Jennifer Berlovan
Dan Beyer
Patricia Bishop
Michelle Blackford
Christiana Blakeslee
Douglas Boes
Gary and Elizabeth Boncella
Barbara J. Bonfiglio
Mackenzie Bonvenuto
Monica Bowe
Gail Bowen
Brian Boyd
Anna Brandt
Kathleen Brenzai
Nora Brenzai
Dionne Broadus
Michelle Broome and Michael Oatman
Christopher and Julia Bruner
Mary Ellen Bujoll

* deceased

Charlotte C. Burgin
 Kathryn Burnett
 Kathy Bytnar
 Steve Campbell
 Rick Campopiano
 Bailey Capelle
 Al Capers
 Francis Casey
 David and Marty Cathcart
 Rorkishe Catledge
 James and Michele Cermak
 Bruce Chambers
 Molly Cheraso
 Doeun V. Chhan
 June Chung
 Rosemarie Cipra
 Veronica Colborn
 Michael and Bonnie Cole
 Roslyn S. Collins
 Yadira Ramos-Colon
 Sarah Corrigan
 Victor Courtney
 Bradford Debusk
 Roderick and Barbara Dibble
 Jonathan Dominy
 Molly A. Drake
 Sarah F. Brawner Dyke
 John Ebert
 Vincent and Karen Eckdahl
 Susan Edwards
 Julie Egler
 Sonja Elekhtaby
 Ryan Ellis
 Jeffrey and Leah Epstein
 Sivan Eshel
 Maria Estes
 Robert Everden
 Betsy J. Fallon
 Richard J. and Judy Felber
 Rachael Martinez-Finn
 Laura Foglyano
 Lisa G. Fortin
 Jasmine Freeman
 Catherine Gallagher
 Jennylee Gandarilla
 Maura Garven
 Ronald Gehrlein
 Ritika Giju
 Pamela Gill
 Deborah Glosserman
 William L. and Jean C. Gordon
 Joan M. Gretter
 Sarah Griffin
 Marisa Grill
 Andrea Grodin
 Norman and Cheryl Gutmacher
 Melissa Guzman
 Sarah Hall
 Sally Halsey
 Jason Harris
 Sheldon and Nancy Hartman
 Tom and Iris Harvie
 Eleanor Hayes
 Matthew D. Heisey
 Jennifer Hennessey
 Melanie Hillenbrand
 Lisa Hodges
 Elizabeth Honold
 Maureen Horton
 Norhala Houck
 Rosanna Hrabnicky
 Mary Hromyko
 Don Iles
 Julie Jacano
 Lynnette Jackson

Toi Jacobs
 Ricki Janis
 Deanna Jarvis
 Lei Jiang
 Loreal Jones
 Alicia Jordan
 Alison Joyce
 Bridget Kakos
 Elizabeth Kannard and Bill Janesh
 Joel H. and Nancy Kay
 Miles and Nancy Kennedy
 Kimberly Kenzig
 Megan Kessler
 Christina Klenotic
 David and Wendy Kornbluth
 Lynn Koster
 Francine Kotarski
 John Kropf
 Aneta Kuzma
 Emily Lauer
 Gary Lewis
 Stacey Love
 Nataliya A. and Andrey Lozovyy
 Christine Fowler-Mack
 Katie Makar
 Greg and Shelley Marcus
 Matthew Markusic
 Kathryn Marshall
 Michael Martaus
 Annelouise Martin
 Ashish Masih
 Jacqueline Matthews
 Quentin McCorvey
 Margaret McGrath
 Jeff J. and Rhonda McKissick
 Vicki McMahan
 Scott McMillen and Beth Scott
 Jeannie Michaels
 Chelsea Mikula
 Rachel A. Miller
 Ginger Mlakar
 Tracy Monroe
 Cora L. Mooney
 Irwin and Beryl Moore
 Zoe Musgrave
 Robert Nevins
 Charles L. and Ann G. Newman
 William and Nancy Oakley
 Ryan Ogrinc
 Melissa Olmstead
 Jaime Onk
 Lydia Oppmann
 Chris O'Rourke
 Timothy and Barbara ORourke
 Sarah Palagyi
 Paul H. Pangrace
 Melissa A. Parey
 Elizabeth Paskin
 Patricia A. Patrick
 Carol Pehotsky
 Shayna Pentecost
 Dalton Pery
 Patricia Persico
 Tim K. Peters
 Alexander Phipps
 Karen Piccolomini
 Cynthia I. Pierce
 Dan Polster and Deborah Coleman
 Amanda Pratt
 Terrell and Angel Pruitt
 Christina Puterbaugh
 Gunes Raack
 Maria Ramirez
 Monisa Ramseur
 Lissy Rand



Phillip and Ann Ranney
 Shirin Rastgoufard
 Myleena Reed
 Janet Renner
 Nicole Rhode
 Howard and Laura Richards
 Christopher Riddle and Lauren Marchaza
 Kaye Ridolfi
 Ruth Riley
 William Ritter
 Bernadette Robinson
 Jo Ann Robinson
 Ken and Joyce Romansky
 Linda Ross
 Eileen Roth
 Jeffrey Rovinsky
 Michelle Rzucidlo
 Twyla Sales
 Michael Salkind and Carol Gill
 Brian and Sherry Buckner-Sallee
 Judy Salm
 Kathy Sarnowski
 Emma K. Scheer
 Arthur Scherbel
 Donna Schneider
 Erin Schober
 John Schroth
 Lori Scott
 Lauren Seymour
 James Shapiro
 Sahar Showman
 Ciara Simiele
 Ken Singer and Marcia Wexberg
 Shazia Singh
 Angela Small
 Aimee Smith
 Terah Speigner
 Amanda Spoores
 Dean L. Sproveri
 Gina Stafford
 Samantha Stahler
 Joseph Starc
 Michael A. Stark
 Stacey Starnes
 *Betty Marcus Sunshine
 Karen Surkala
 Kathleen Tabor
 Mark Tepsich
 Jay Thacker
 Jessica Thiel
 Kathryn Thomas
 Ethan Thompson
 Charles and Gretchen Tice
 Benjamin Tomins



Mary Triest
 Stephanie Turner
 Melissa Ullom
 Robert Vajda
 Ronald Van Alstyne
 Charles and Adrienne Van Dyke
 Homer A. Virden
 Robin Voytko
 Roger and Jane Warner
 *Marvin and Ieda Warshay
 Katherine Wensink
 Tiffany White
 Kathleen Wickens
 Erica Wicks
 Tonya Wilde
 Brittany Williams
 Megan Wilson
 Scott and Barbara Wilson
 Michelle Wood
 Edwin Wortham
 Bryan Wortmann and Caitlin Walsh
 Mikhail Yatsushkevich
 Sienna Zeilinger
 Denise Ziganti

IN HONOR OF

Kristen Baird Adams
 Julie A. and Peter E. Raskind

Ann-Marie Ahern
 McCarthy, Lebit, Crystal & Liffman Co.,
 L.P.A.

Ian Barrett
 Julia Barrett

Lanise Beavers
 Anna Brandt

April Miller Boise
 Jeff and Lisa Willbrand

Cynthia Emlen Boncella
 Gary and Elizabeth Boncella

Jeanette Grasselli Brown
 Sara A. Adams

James Garanich
 Leo J. Shapiro & Associates

Taylor M. Goodman and Firas Ibrahim
 Alan S. and Susie Kopit

Thomas Henderer
 Philip Angelo

Alan S. Kopit
 David and Lynn Heiman
 Phillip B. Singer

Elroy D. Kursh
 Steve Brick
 Margaret A. Kennedy and Robert Paul
 Michael and Barbara Peterman
 James and Betsy Sampliner
 James Shapiro

Charlie Martens
 Charles D. and Charlotte Fowler

Margaret McGrath
 Detroit Drives Degrees

James Mayer
 Joseph Starc

Colleen O'Neil
 McCarthy, Lebit, Crystal & Liffman Co., L.P.A.

Peter E. Raskind
 Capital One

Charles and Sally Inglis Rich
 *Betty Marcus Sunshine
 Charles E. and Adrienne Van Dyke

Enid Rosenberg
 David and Lynn Heiman

William and Nancy Seelbach
 Laurel Chockley

Rob and Nancy Stall
 Seth Podolsky

Howard A. Steindler
 Norman and Cheryl Gutmacher

Tashiana Stover
 Stacey Schroeder

Daniel Valerian
 Centric Consulting, LLC

Elizabeth H. Warshawsky
 Ruth Fiordalis
 Tom and Iris Harvie

Kittie D. Warshawsky
 David and Wendy Kornbluth
 Byron and Joan Krantz
 Marlene Ricanti
 Elliott and Gail Schlang

Sandy Wuliger
 Elissa Wuliger

Mark and Diane Zupon
 Dan Barnett
 Kathy Bytnar
 Cynthia DeMarco
 Barbara Fodor
 Michael A. Stark
 Lawrence E. and Jill Zupon

In Memory Of

Kenneth Anthony
 Jeffrey M. and Hallie Wasserman

Bill Bauer
 William and Jane Baldwin

Mary Alice Brooks
 Jennifer Meyer

Willia Coleman
 Lakeside Supply Company
 Howard Richards
 Wilkes Plumbing & Heating

Robert C. Coplan
 Bernard D. and Susan Goodman

Dora Davidson
 William and Carol Foley

Charles and Frances Feiner
 Steven Kutnick and Jacqueline F. Derrow
 Todd and Shelley F. Rodman
 Peter and Robyn F. Winokur

Helen Foley
 William and Carol Foley

Robert Fortney
 Matthew H. Frank

Robert M. Ginn
 William H. Cruse
 Barbara Ginn

Delmar Gogol
 Alan S. and Susie Kopit

Lefty Hodous
 Charles and Sally Inglis Rich

Sandy Hosek
 John and Sharon Hosek

Patrick R. Kennedy
 Betsy J. Fallon

Neil Kurit
 Donna Chernin Kurit

C. Oommfin
 Ritika Giju

Michael D. Robinson
 Jo Ann Robinson

Clara Small
 Angela Small

Helen Trutko
 Mary C. Warren

Marvin Warshay
 Ieda Warshay

Bertie Lou Williams
 Directions Service

Matching Gift Companies and Organizations

Bank of America
 The John Huntington Fund for Education
 KeyBank
 The Lubrizol Corporation
 NACCO Industries, Inc.
 The Nordson Corporation
 Progressive Corporation
 RPM International, Inc.
 Salesforce.com Foundation
 The Sherwin-Williams Foundation

College Now would like to thank the following entities for their in-kind donations

California Closets
 Candlewood Suites
 Case Western Reserve University
 Chipotle Mexican Grill
 Cleveland Browns
 Cleveland Indians
 Dagne Dover
 Eileen Fisher, Inc.
 Fleming's Steakhouse
 FOUNT
 Frances Valentine

* deceased

Hartland & Co.
Hirtle Callaghan & Co.
Huntington National Bank
Hyatt Legal Plans, Inc.
J3 Clothing Co.
Long & Short of It
Lovely Paperie & Gifts
The MetroHealth System
Ohio College Access Network
Oswald Companies
Sikora Family Dentistry
The Style Loop
Target Corporation
The Ultimate Air Shuttle
United Airlines
Westfield Group
Whiskey Grade
WKYC

College Now would like to thank the following individuals for their in-kind donations

Anne Ames
Suzanne Aral-Boutros and Akram Boutros
Tess Boutros
Henry G. and Patricia Brownell
Harry Carlson
Fiona and Brian F. Chambers
Richard and Joanne Clark
Dan and Nan Cohen
Craig Corder
Katinka Domotorffy
Deb Donley
Diane Downing and Tom Corrigan
Judith and Thomas J. Embrescia
Donna Farr
Lauren Rich Fine and Gary Giller
Jan Heideloff
Peter Holway
Michael Joyce
Margaret A. Kennedy and Robert Paul
Jimmy A. and April Malone
Cathy Markusic
Nancy McCann
Beth Mooney
Colleen O'Neil
Mary Beth Pate
Julie A. and Peter E. Raskind
Sherri Robertson
Mark Ross
Marguerite Russell
Nina Selauko
Michele Seyranian
Angie Spitaleri
Rob and Nancy Stall
Sally and Terry Stewart
David and Laura Vexler
Alenka M. Winslett

College Now is very appreciative of those individuals whose planned gifts will benefit future generations of students

Dorris C. Michalske
Danny Solow and Audrey Davis

College Now would like to thank the following members of the Emerging Leaders Association for their generous contributions of time and expertise

Tosin Araba, Swagelock

Samantha Baker, Ohio University
Tess Boutros, Lucio Vannie Bridal & Couture
Carrie Busic, Westfield Insurance Company
Maria Chan, Schlumberger
Jessica Choromanski, Riverside Company
Karen Cross-Hatten, Cuyahoga Community College
Christopher DeVito, Deloitte
Andrea Donatone, Nordson Corporation
Kristina Dooley, Estrela Consulting
Aaron Ferlotti, Cohen & Co.
Adrienne Fischer, EY
Matthew Grimes, Cleveland Metropolitan School District
T'La Haritson, Schneider Downs
Carly Hill, Care Alliance Health Center
Leah Hudnall, The George Gund Foundation
Kara Jeffries, Cuyahoga County Jobs & Family Services
Kwanza Johnson, Broward County Public Schools
Alison Jones, Precision Metalforming Association
Monica Lacks, Ogletree & Deakins
Hannah Lebovits, Cleveland State University
Larissa Malcolm, Catholic Charities
Samantha Mucha, Gabriel Partners
Jarrod Nadzan, JPMorgan Chase
Thien Nguyen, The Ohio State University
Saurin Patel, Westfield Insurance Company
Jennifer Pisansky, Zaytuna College
Julianne Potter, BrownFlynn
Yadira Ramos-Colon, Deloitte
Amy Rice, College Now Greater Cleveland
Judy Salm, Grants Plus
Samantha Selio, Nordson Corporation
Michael Shay, Hawthorn PNC Family Wealth
Chaundrea Simmons, Verantis Corporation
Chelsea Smith, Tucker Ellis
Rae Stewart, Deloitte
Wenzhu Sun, Global Cleveland
Christine Taylor, Medical Mutual of Ohio
Sarina Turner, American Greetings
Clarissa White, Cuyahoga Community College
Brittany Williams, Destination Cleveland
Elizabeth Williamson, City of Cleveland
Jazmine Williamson, Neurotech
Bobby Withrow, ArcelorMittal

College Now is grateful to these longstanding donors whose sustained commitment to educational attainment is both inspiring and impactful

25+ YEARS CONSECUTIVE GIVING

Bicknell Fund
Glenn and Jeanette Grasselli Brown
Harry Carlson
The Cleveland Foundation
Cleveland Rotary Foundation
The George W. Codrington Charitable Foundation
Dominion Foundation
Richard M. Donaldson
Eaton Corporation
FirstEnergy Foundation
David B. Goldston and Bonnie Borman
The George Gund Foundation
Haskell Fund
Michael J. and Jane R. Horvitz
George M. & Pamela S. Humphrey Fund
The John Huntington Fund for Education
Martha Holden Jennings Foundation

Ceena R. Jewell
KeyBank
Kiwanis Foundation of Cleveland, Inc.
The Lincoln Electric Co.
Gilbert and Carol Lowenthal
The Lubrizol Corporation
The Murch Foundation
David & Inez Myers Foundation
The Perkins Charitable Foundation
PNC
Robert C. and Katharine C. Ruhl
Aaron Saltzman
The Sherwin-Williams Foundation
Kent H. Smith Charitable Trust
The George Garretson Wade Charitable Trust #2
The S. K. Wellman Foundation
Jane D. White Fund No. 2
The Thomas H. White Foundation
Anna L. Zverina

10+ YEARS CONSECUTIVE GIVING

The Abington Foundation
Thomas W. and Joann Adler
Christopher and Tina Benavides
Benesch, Friedlander, Coplan & Aronoff LLP
Flora Blumenthal
Michael Bohinc
Charles P. and Julia Bolton
Robert Clarke Brown
The Eva L. and Joseph M. Bruening Foundation
Charles M. and Susan I. Caito
Cleveland Browns Foundation
Cleveland Indians
Michael and Bonnie Cole
The Community Foundation of Lorain County
Michael and Lori Conley
Michael A. Costanzo
Harry Coulby Fund No. 2
Colleen M. Craven
Pitt A. and Sally H. Curtiss
Manohar L. and Chandra K. Daga
Gary S. and Andrea Desberg
Roderick and Barbara Dibble
Christine & Guido DiGeronimo Foundation
Lee DiGeronimo
Robert and Jennifer DiGeronimo
Robert and Sarah Durham
Lauren Rich Fine and Gary Giller
Catherine Fishbach
Allen H. Ford
Fortney & Weygandt, Inc.
Harry K. Fox & Emma R. Fox Charitable Foundation
The Giant Eagle Foundation
Joyce Glickman
Bernard D. and Susan Goodman
Frank Holowach and Pam Williams
John and Sharon Hosek
Patricia M., Jaclyn and Kathryn Inglis
JPMorgan Chase Foundation
Margaret A. Kennedy and Robert Paul
Kinzua Environmental, Inc.
Alan and Susie Kopit
Charles and Joyce Kullik
Laborers' International Union of North America, Local No. 894
Tom E. and Betsy Leib
Stephen and Lillian Levine
Lawrence A. Mack
Jimmy and April Malone
Toby and Melanie T. Maloney
Richard D. and Margaret Margolis
Materion Corporation
Patrick and Martha McGraw

Medical Mutual of Ohio
 Megan L. Mehalko
 Stanley and Barbara Meisel
 John C. Morley
 Warren L. and Betsi Morris
 Patrick S. and Amy Mullin
 John P. Murphy Foundation
 Dale and Barbara Nitzsche
 The Nordson Corporation Foundation
 Norhio Plumbing, Inc.
 Our Lady of the Wayside
 Paul H. Pangrace
 Patricia A. Patrick
 Paul and Kim Pesses
 Pipefitters Local 120
 Dan Polster and Deborah Coleman
 Preformed Line Products Co.
 The Ratner Miller Shafran Foundation
 Barbara S. Robinson
 Walter J. and Janice A. Romansky
 Linda Ross
 RPM International, Inc.
 Michael Salkind and Carol Gill
 Dorothy M. Sawyer
 Richard F. and Elizabeth A. Schiferl
 Robert J. and Cynthia Schneider
 Fred E. Scholl Charitable Foundation
 Lawrence M. and Sally Z. Sears
 Fareed and Laura Siddiq
 The Kelvin & Eleanor Smith Foundation
 Joseph D. and Catherine Sullivan
 James Szabo
 Howard J. and Sara S. Tucker
 Susan M. and Bill Tyler
 United Way of Greater Cleveland
 University Hospitals Health System
 Mary C. Warren
 Jeffrey M. and Hallie Wasserman
 Stacy and Sam Watts
 Alenka M. Winslett
 Milton A. & Roslyn Z. Wolf
 Family Foundation
 Thomas Zlatoper

5+ YEARS OF CONSECUTIVE GIVING

ACE Mentor Program of Cleveland
 Kristen Baird Adams
 Rita Andolsen
 Apple America Group
 Arconic Foundation
 Ric and Kate Asbeck
 Frank Balass
 Virginia Benjamin and Philip Woodcock
 Jack W. & Shirley Berger Fund of the Jewish
 Federation of Cleveland
 Norman and Deborah Bolden
 Cynthia Emlen Boncella and Keith Anderle
 Stephanie and Jeff Bunsey
 Charlotte C. Burgin
 Business of Good Foundation
 Richard and Doreen Cahoon
 Calfee, Halter and Griswold LLP
 Capital One
 Karen J. Carcione
 Sunil and Cynthia Chand
 Change for Charity
 William and Cathy Christopher
 City of Cleveland
 Cleveland Clinic
 Cleveland Public Library
 Cliffs Natural Resources
 Corporate Charters
 Cuyahoga County
 Carrie B. Davis
 Elizabeth and Brody Day

Deloitte
 Diane Downing and Tom Corrigan
 Judith and Thomas J. Embrescia
 Bill and Carol Foley
 Forest City Enterprises
 Lee A. Friedman and Joe Gogol
 GAR Foundation
 James and Carol Garanich
 William Garrison and Mary Jo Mlakar
 Barbara Ginn
 Matthew Glickman and Susie Hwang
 Bruce and Deborah Goode
 Florence S. Goodman
 Grant Thornton LLP
 Burt W. and Beatrice Griffin
 Richard and *Carol Gross
 John S. and Elaine M. Hibshman
 Charles R. Honton and Margaret Beck
 Hyatt Legal Plans, Inc.
 Hyland Software, Inc.
 Charles King and Catherine Keating
 William and Jean Koehler
 William B. La Place
 Toby D. Lewis
 Elton Lytle and Kristin Galewood
 Mark Magyar and Susan Dolfi
 Maltz Museum of Jewish Heritage
 Mansour, Gavin, Gerlack & Manos Co., LPA
 Richard T. and Polly A. Marabito
 Marketplace Events
 James and Kathe Mayer
 Nancy W. McCann
 Bridget M. McFadden and Thomas Sylvester
 Jeff J. and Rhonda McKissick
 Medic Management Group
 Estate of Dorris C. Michalske
 Lorraine Miller
 Bernie Moreno Companies
 David and Lori Neiswander
 John G. and Karen R. Nestor
 Evelyn B. Newell
 Gerald F. and Evelyn Newman
 Nissan of North Olmsted
 Northern Trust Bank
 Oswald Companies
 Melissa A. Parey
 Mark Phillips and Lita Gonzalez
 Sandra Pianalto
 James R. Pierce
 PwC
 Roger F. and Alison Rankin
 Bernadette Robinson
 Todd and Shelley F. Rodman
 Alan and Barbara Rosskamm
 George F. Schaefer
 John D. and Barbara Schubert
 Michele Scott Taylor and Douglas Taylor
 Robert and Donna Simoneau
 Stephanie and Jeffrey Spencer
 Sports & Scholars
 Jill Stanley
 Sally and Terry Stewart
 William Stultz
 Swagelok Company
 Julie A. and George M. Szeltner
 Taylor Oswald
 Third Federal Savings & Loan Foundation
 Tucker Ellis LLP
 United Way of Summit County
 Universal Windows
 Roger S. and Sharon K. Vail
 Deborah Vesey
 Vocon Design, Inc.
 Elizabeth H. Warshawsky
 Kittie D. Warshawsky and Timothy Tibbitts

Wells Fargo Insurance
 George Wenz
 Dickson L. and Ann Whitney
 Peter and Robin F. Winokur
 WJW Fox 8 Cleveland
 John H. and Jacqueline F. Woods
 Timothy and Sandy Wuliger
 Dan and Ellen Zelman

Community and Educational Partners

ACE Mentor Program of Cleveland
 Akron Public Schools
 Aspire
 Avon Local School District
 Baldwin Wallace University
 Barberton High School
 Barberton Public Library
 Bay Village City School District
 Beachwood City School District
 Bedford City School District
 Berea City School District
 Big Brothers Big Sisters of Greater Cleveland
 Bowling Green State University
 Breakthrough Charter Schools
 Broadway - Slavic Village P-16
 Brunswick City School District
 Care Alliance Health Center
 Case Western Reserve University
 Catholic Charities - St. Phillip Neri
 Centers for Families & Children
 Cincinnati Youth Collaborative
 City Club of Cleveland
 City of Barberton
 City of Cleveland
 City Year
 Cleveland Central Catholic High School
 Cleveland Clinic
 Cleveland Heights-University Heights
 School District
 Cleveland Hillel Foundation
 Cleveland International Film Festival
 Cleveland Metroparks
 Cleveland Metropolitan School District
 The Cleveland Museum of Natural History
 Cleveland Public Library
 Cleveland Rape Crisis Center
 Cleveland State University
 Cleveland Transformation Alliance
 College Club of Cleveland
 Columbia Local School District
 The Council for Economic Opportunities in
 Greater Cleveland
 Cuyahoga Community College
 Cuyahoga County
 Cuyahoga County Fatherhood Initiative
 Cuyahoga County Public Library
 Cuyahoga Valley Career Center
 Destination Cleveland
 East Cleveland City School District
 Eastern Michigan University
 Educational Service Center of
 Cuyahoga County
 Educators for Fair Consideration
 Elyria City School District
 Esperanza, Inc.
 Euclid City Schools
 Euclid Public Library
 Fairfax Renaissance Development Corporation
 Firelands Local School District
 Friendly Inn Settlement
 Garfield Heights City School District
 Geshner
 GetWorkerFIT
 Great Lakes Science Center

* deceased

Greater Cleveland Neighborhood Centers Association
 Greater Cleveland Partnership
 Habitat for Humanity
 Higher Education Compact of Greater Cleveland
 Highland Local School District
 Hiram College
 Holy Name High School
 i know i can
 ideastream
 Indiana Wesleyan University
 Job Corps
 John Carroll University
 Kent State University
 Lakeland Community College
 Lakewood City Schools
 Link 4 Schools
 Lorain City School District
 Lorain County Community College
 Lorain County JVS
 Lorain County Urban League
 MAGNET
 Magnificat High School
 Marion Correctional Facility
 Mayfield City School District
 The MetroHealth System
 Miami University
 Midview Local School District
 Minds Matter of Cleveland
 Moms First
 NASA Glenn Research Center
 National College Access Network
 National Scholarship Providers Association
 Neighborhood Connections
 Neighborhood Leadership Institute
 NEO Talent Exchange
 New Hope Fellowship Church
 NewBridge
 Northeast Ohio Council on Higher Education
 Notre Dame College
 Oberlin College
 Ohio Association of Student Financial Aid Administrators
 Ohio Department of Education
 Ohio Department of Higher Education
 OhioGuidestone
 Ohio Means Jobs
 The Ohio State University
 Ohio University
 Olmsted Falls City School District
 Open Doors Academy
 Padua Franciscan High School
 Parma City School District
 Passages, Inc.
 Playhouse Square
 PNC Fairfax
 Polaris
 Promise Academy
 Richmond Heights City School District
 Rocky River City School District
 Salvation Army
 Say Yes to Education
 ServeOhio
 Shaker Heights City School District
 Solon City School District
 South Euclid-Lyndhurst City School District
 St. Edward High School
 St. Ignatius High School
 St. Joseph Academy
 St. Martin de Porres High School
 Starting Point
 Summer on the Cuyahoga
 Summit Education Initiative
 Teach For America

Team NEO
 Towards Employment
 Trinity High School
 True2U Youth Mentoring Program
 U.S. Department of Education
 United Way of Greater Cleveland
 University Hospitals Health System
 University of Akron
 University of Toledo
 University Settlement
 Urban League of Greater Cleveland
 Urban League of Lorain County
 Ursuline College
 Villa Angela-St. Joseph High School
 Wadsworth City School District
 Warrensville City School District
 Wellington Exempted Village School District
 WIRE-Net
 Youth Opportunities Unlimited
 YWCA Greater Cleveland

Scholarship Partners

ACE Mentor Program
 Bill Christopher-Alcoa Leadership Scholarship Fund
 Althans Scholarship Fund
 Sophie Auerbach Scholarship Fund of The Cleveland Foundation
 Joseph Babin Endowed Scholarship Fund
 Michael Baruschke and Denise Huck Scholarship Fund
 James C. Beardslee Fund of The Cleveland Foundation
 Cornelia W. Beardslee Fund of The Cleveland Foundation
 Jack W. & Shirley Berger Endowment Fund of the Jewish Federation of Cleveland
 Boodle Endowed Scholarship Fund
 George H. Boyd Scholarship of The Cleveland Foundation
 Britton Endowed Scholarship Fund
 Eva L. and Joseph M. Bruening Foundation Endowed Scholarship Fund
 Cambodian Scholarship for Excellence Fund
 Children War Memorial Fund of The Cleveland Foundation
 The Christopher Family Scholarship Fund
 City of Cleveland Black History Scholarship Fund
 City of Cleveland Scholarship Fund
 Cleveland Association of Phi Beta Kappa
 Cleveland Browns Foundation
 The Cleveland Foundation
 Cleveland Indians
 Cleveland Rotary Foundation
 Cliffs Natural Resources
 Cliffs Natural Resources Breakthrough Schools Scholarship
 Roy and Willia Coleman Scholarship Fund
 The College First Scholarship Fund
 The College Now Alumni Endowed Scholarship Fund
 The Margot J. Copeland Scholarship Fund
 Shirley and Robert Coplan Endowed Scholarship Fund
 Harry Coulby Scholarship Fund
 Cuyahoga County Scholarship Fund
 Deloitte Accounting Scholarship
 Mary M. Doll Endowed Scholarship Fund
 Eaton Corporation
 Educators for Fair Consideration
 Judith Embrescia Scholarship Fund
 Thomas J. and Judith Embrescia Endowed Fund
 Irene C. and Karl Emmerling Scholarship Fund of The Cleveland Foundation

Even Cut Abrasive Company
 Charles and Francis Feiner Endowed Scholarship Fund
 Ferro Foundation Endowed Scholarship Fund
 Robert L. Fortney Endowed Scholarship Fund
 General Electric Scholarship Fund
 Eleanor Gerson Endowed Scholarship Fund
 George Gund Foundation
 Sondra and Stephen Hardis Endowed Scholarship Fund
 Harvard Business School Club of Northeast Ohio Scholarship Fund
 Henkel Consumer Adhesives Endowed Scholarship Fund
 Hitachi Medical Systems America, Inc.
 George M. Humphrey Scholarship Fund
 Gilbert and Louise Ireland Humphrey Endowed Scholarship Fund
 The John Huntington Fund for Education
 David S. Inglis Endowed Scholarship Fund
 The Intown Club of Cleveland Scholarship Fund
 Mayor Frank G. Jackson Endowed Scholarship
 Charles and Margaret Jones Scholarship Fund
 Sharon Kearns Endowed Scholarship Fund
 Margaret A. Kennedy Endowed Scholarship Fund
 KeyBank National Association
 Kiwanis Scholarship Fund
 KnowledgeWorks Foundation Endowed Scholarship Fund
 Charles E. Kullik Scholarship Fund
 Laborers' International Union of North America, Local No. 894
 Marcia LaRiche Endowed Scholarship Fund
 Bobby R. Larkin, Sr. Charitable Association, Inc. Endowed Scholarship Fund
 Leadership Cleveland Endowed Scholarship Fund
 Fred A. Lennon Charitable Trust
 Sue L. Little Fund of The Cleveland Foundation
 Elizabeth T. Lohmiller Fund of The Cleveland Foundation
 Theresa Mae MacNab Fund of The Cleveland Foundation
 The Malone Endowed Scholarship Fund
 Maltz Museum of Jewish Heritage
 Materion Corporation
 Elizabeth Ring Mather & William Gwinn Mather Endowed Scholarship Fund
 Meisel Family Scholarship Fund
 The Bernie Moreno Company Drive to Succeed Scholarship Fund
 David A. and Florence F. Moritz Endowed Scholarship Fund



David & Inez Myers Foundation Endowed Scholarship Fund
 The Scholarship for a New Generation
 Nordson Corporation Foundation
 The One Candle Endowed Scholarship Fund
 O'Neill Endowed Scholarship Fund
 Parkway Pharmacy
 Pipefitters Local 120
 Millicent W. Pitts Endowed Scholarship Fund
 Plain Dealer Endowed Scholarship Fund
 Gloria Pointer Scholarship Fund
 Anita Lois Poole Minority Scholarship Fund
 Preformed Line Products Company
 F.M. Pritchard Fund of The Cleveland Foundation
 Florence Mackey Pritchard and P.J. Pritchard Scholarship Fund of The Cleveland Foundation
 William Roberts Endowed Scholarship Fund
 Samuel Rosenthal Foundation Endowed Scholarship Fund
 Ratner Miller Shafran Foundation
 Robert J. Schneider Endowed Scholarship Fund
 Fred E. Schöll Charitable Foundation
 Augie Schroeder Endowed Scholarship Fund
 Shearer's Foods, Inc.
 Sherwin-Williams Company
 Shiksha Daan Scholarship Fund
 Sisters of Charity Healthcare Foundation Scholarship Fund
 Joi Renee Smith Scholarship Fund
 Kent H. Smith Charitable Trust
 Solow Endowed Scholarship Fund
 Sally Stewart Scholarship Fund
 Ralph P. Stoddard Memorial Fund of The Cleveland Foundation
 Swagelok Advantage Scholarship Fund
 Swaminathan and Garg Foundation Scholarship Fund
 Swamy Family Scholarship Fund
 Teamsters Truck Drivers Union Local 407
 The Union Club Scholarship Fund
 University Hospitals Endowed Scholarship Fund
 Ella M. Walz Memorial Fund of The Cleveland Foundation
 Waxman Family Scholarship Fund
 William M. Weiss Foundation Endowed Scholarship Fund
 Jane D. White Fund No. 2 Scholarship Fund
 Thomas H. White Foundation
 Teresa Jane Williams Memorial Fund of The Cleveland Foundation
 Milton A. and Roslyn Z. Wolf Scholarship Fund
 Margaret W. Wong Scholarship Fund
 Youth for Holiness Scholarship Fund

College Now Board of Directors

CHAIR

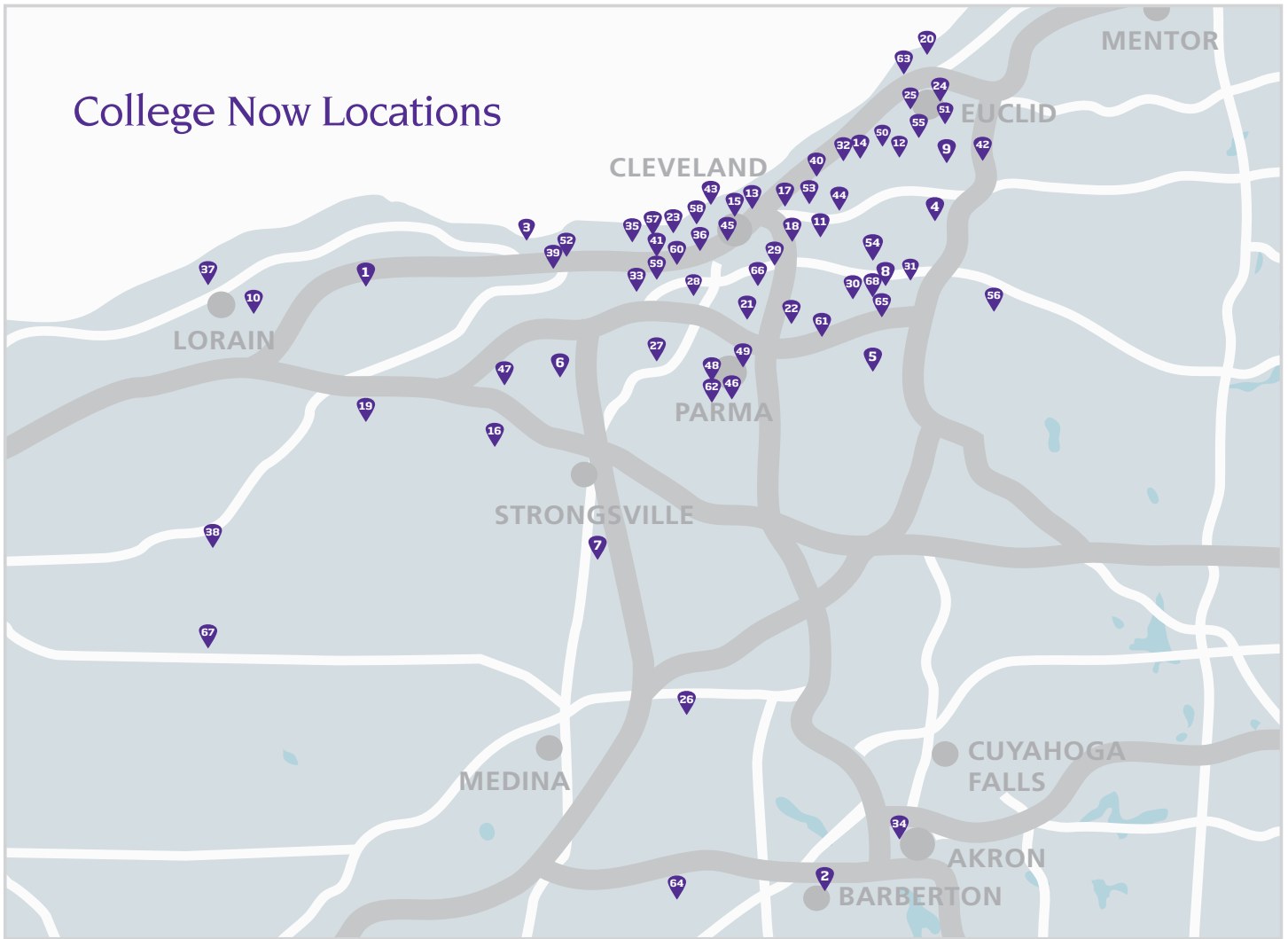
Alan S. Kopit, MediLogix LLC

TRUSTEES

Kristen Baird Adams, PNC
 Jennifer Altstadt, Sea-Land Chemical Co.
 Rita Andolsen, The MetroHealth System
 Stephanie Antunez, California Closets
 Brian Barren, Cleveland Indians
 Mary Beth Beck, EY
 Virginia Benjamin, Calfee, Halter & Griswold LLP
 Suzanne Aral-Boutros, State Farm Insurance
 Gabe Bruno, The Lincoln Electric Co.
 Brent Buckley, Buckley King LPA
 Dick Cahoon, Dealer Tire (ret.)
 Harry Carlson, The Lincoln Electric Co. (ret.)
 Fiona Chambers, Deloitte
 Timothy Cosgrove, Square Patton Boggs
 Katinka Domotorffy, Community Leader
 Diane Downing, Huntington National Bank
 Ward Dumm, Swagelok
 Judith Embrescia, Community Leader
 Trina Evans, KeyBank
 Lauren Rich Fine, Gries Financial LLC
 David Fulton, Hartland
 James Garanich, FirstEnergy
 James R. Geuther, SunTrust Bank
 Joseph Glick, Deutsche Bank
 David Goldston, Jo-Ann Stores, LLC
 Richard (Rick) Gross, Grant Thornton, LLP
 Patricia Inglis, San Francisco Forty Niners
 Kathleen Kennedy, The Nordson Corporation
 William Koehler, Team NEO
 Jimmy Malone, WMJI (Clear Channel)
 Megan Mehalko, Benesch, Friedlander, Coplan & Aronoff LLP
 Russ Mitchell, WKYC
 Joseph Morford, Tucker Ellis LLP
 Patrick S. Mullin, Deloitte (ret.)
 Raju Patel, Bank of America
 Cheri Phyfer, Moen U.S. Businesses
 Sandra Pianalto, Federal Reserve Bank of Cleveland (ret.)
 Julie Adler Raskind, Community Leader
 Sean Richardson, Huntington National Bank
 Beth Riczko, Community Leader
 Mark Ross, PwC
 Traci Rourke, McMaster-Carr Supply Company
 John Spencer, Eaton Corporation
 Sean Stack, Aleris
 Sally Stewart, Howard Hanna
 J.D. Sullivan, Jr., MFH Partners
 Eddie Taylor, Taylor Oswald
 Ingrid Tolentino, Hyatt Legal Plans, Inc.
 David Turner, FirstEnergy Corp.
 Susan M. Tyler, Community Leader
 Deborah Vesey, Deaconess Community Foundation
 Jeffrey Wasserman, Oswald Companies
 Christopher Williams, Calfee, Halter & Griswold LLP
 Gina Abercrombie-Winstanley, U.S. Ambassador to Malta (ret.)



College Now Locations



- | | | |
|---|--|---|
| 1 Avon High School | 24 Ginn Academy | 47 Olmsted Falls High School |
| 2 Barberton Public Library | 25 Glenville High School | 48 Padua High School |
| 3 Bay High School | 26 Highland High School | 49 Parma Senior High School |
| 4 Beachwood High School | 27 Holy Name High School | 50 Patrick Henry K-8 School |
| 5 Bedford High School | 28 James Ford Rhodes High School | 51 Richmond Heights High School |
| 6 Berea – Midpark High School | 29 Jane Addams – Business Careers Academy | 52 Rocky River High School |
| 7 Brunswick High School | 30 John Adams High School | 53 Saint Martin de Porres High School |
| 8 Charles Eliot K-8 School | 31 John F. Kennedy High School | 54 Shaker Heights High School |
| 9 Charles F. Brush High School | 32 John Hay High School – All Schools | 55 Shaw High School |
| 10 Clearview High School | 33 John Marshall High School | 56 Solon High School |
| 11 Cleveland Central Catholic High School | 34 Kenmore-Garfield High School | 57 St. Edward High School |
| 12 Cleveland Heights – Univeristy Heights Middle School | 35 Lakewood High School | 58 St. Ignatius High School |
| 13 Cleveland High School for Digital Arts | 36 Lincoln West High School | 59 St. Joseph Academy |
| 14 Cleveland School of the Arts | 37 Lorain High School | 60 Thomas Jefferson International Newcomers Academy |
| 15 College Now Resource Center | 38 Lorain JVS High School | 61 Trinity High School |
| 16 Columbia High School | 39 Magnificat High School | 62 Valley Forge High School |
| 17 Design Lab Early College | 40 Martin Luther King Jr. Campus | 63 Villa Angela-St. Joseph High School |
| 18 East Technical High School/New Tech at East Technical Campus | 41 Max S. Hayes Careers Center & Technical School/New Tech at Max S. Hayes | 64 Wadsworth High School |
| 19 Elyria High School | 42 Mayfield High School | 65 Warrensville Heights High School |
| 20 Euclid High School | 43 MC2STEM-9th Grade | 66 Washington Park Environmental Studies Academy |
| 21 Facing History New Tech High School | 44 MC2STEM-10th Grade | 67 Wellington High School |
| 22 Garfield Heights High School | 45 MC2STEM-11th and 12th Grades | 68 Whitney M. Young Leadership Academy |
| 23 Garrett Morgan High School | 46 Normandy High School | 69 Wilbur Wright K-8 School |

Please call 216.241.5587 for a community location near you.



50 Public Square, Suite 1800
Cleveland, OH 44113
216.241.5587

www.collegenowgc.org